



## The Jewellery Valuation Service

Appraisal of Watches Jewellery & Silverware

Schedule Number: 3819

Date of Appraisal: 16/03/2017

Document printed on: 21/03/2017

# Valuation for Insurance Appraisal

Based on values current at the date of Appraisal and valid only for the purpose specified.  
For clarification of the terms used in this document please refer to the glossary and Notes to the Schedule.

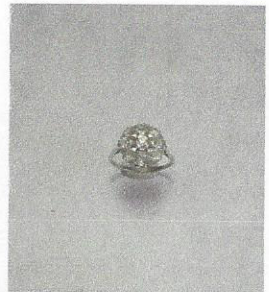
Gold £975.76 per oz Platinum £761.60 per oz £1 = \$1.22

## Schedule

### Item 1. Ring

Platinum mounted nine stone old cut diamond set daisy cluster ring

Total diamond weight: 1.83ct (estimated)



### Ring details...

Head style:	Daisy-head cluster Claw set
Head length/width:	13.5mm / 13.0mm
Finish, head:	Polished
Shoulder style:	Knife edge, cheniered
Shank width / depth:	1.10mm / 1.00mm
Shank style:	"D" profile. Shank finish: Polished. Ring size: M
Manufacture:	stamped and accepted as Platinum
Stamp marks:	Plat
Period:	Late Victorian
Condition:	Fair (average condition, see notes)

### Diamond details...

Clarity:	1 Victorian round brilliant cut diamond; Eight claw setting, white.
Colour:	The approximate measurements are 4.40 x 4.40 x 2.62mm.
	The <i>calculated</i> weight is 0.34cts
	VS assessed mounted.
	I-J assessed mounted.

### Diamond Melee details...

Clarity:	8 diamonds, Round Old cut. 0.16 to 0.23cts each. Claw set
Colour:	SI
Total Weight:	I-J
Stone appraisal:	1.49cts. estimated
	Parameters are an average assessed mounted.

Weight: 3.97 Grams

**PERIOD SECOND-HAND REPLACEMENT VALUE.**

**£5,250.00**